

Boolean Operators

Learning Objective: Students will employ Boolean operators appropriately to broaden or narrow their search and locate sources suitable for their research needs.

Threshold Concept: “Searching is strategic.”

“Low Tech”

- Each group is presented with a paper bag. Inside are:
 - A Venn diagram related to one Boolean operator
 - A variety of somewhat related items (e.g., things students typically carry in their backpacks)
- Working together, students categorize the items according to any criteria they choose.
- Students arrange the items on desk or floor into an approximation of the Venn diagram—thus illustrating the relationship between concepts representing the functioning of the Boolean operators.



“High Tech”

- Each group is presented with a “Prezi” featuring:
 - A Venn diagram related to one Boolean operator
 - A scattering of somewhat related images (e.g., images of places on campus)
- Working together, students categorize the images according to any criteria they choose.
- Students drag-and-drop images to arrange them into an approximation of the Venn diagram—thus illustrating the relationship between concepts representing the functioning of the Boolean operators.

1. Identify your Boolean.

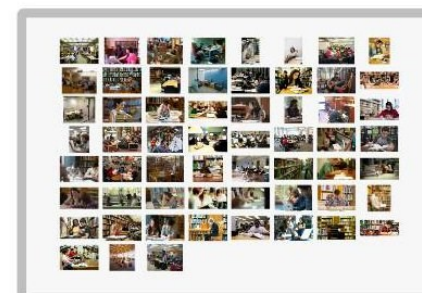


This Boolean Operator Is:
Use one of the tools under “Frames & Arrows” above to indicate the correct response.

- A. And
- B. Or
- C. Not

2. See what you notice about these images, and group them according to any categories you choose.

(Click on the box and select “Zoom to Frame.”)



3. Choose 2 categories, and drag-and-drop them on the screen until they match the Boolean relationship in the diagram under #1.

